

Report No.:56.05518-Recessed Downlight Test Time: 2022-04-27 09:29

## Luminaire Property

Luminaire Category: Citizen 1203 3000K CRI90

Voltage: 213.6 V

Current: 0.068 A

Power: 14.00 W

Power Factor: 0.964

## Photometric Results

CIE Class: Direct

Measurement Flux: 1287.4 lm

Downward Ratio: 100%

Total Rated Lamp Lumens: 1287.4 lm

Efficiency: 100%

Upward Ratio: 0%

Horizontal Diffuse Angle(25%,50%,75%,100%): H21.8,H16.8,H12.7,H0

Vertical Diffuse Angle(25%,50%,75%,100%): V21.8,V16.8,V12.7,V0

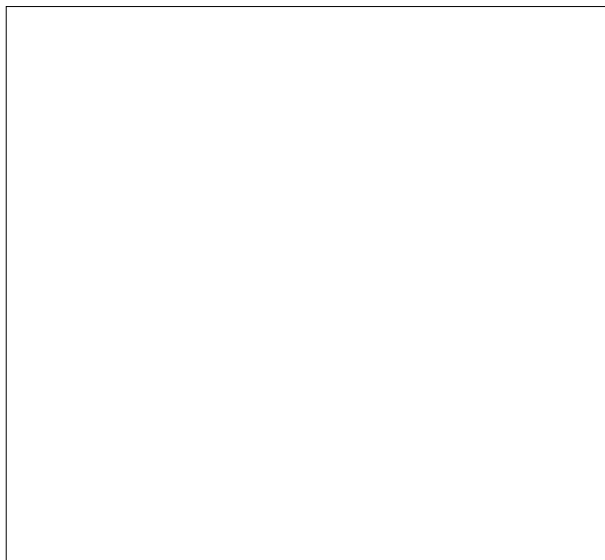
Luminaire Efficacy Rating (LER): 92

Central Intensity: 11033.62 cd

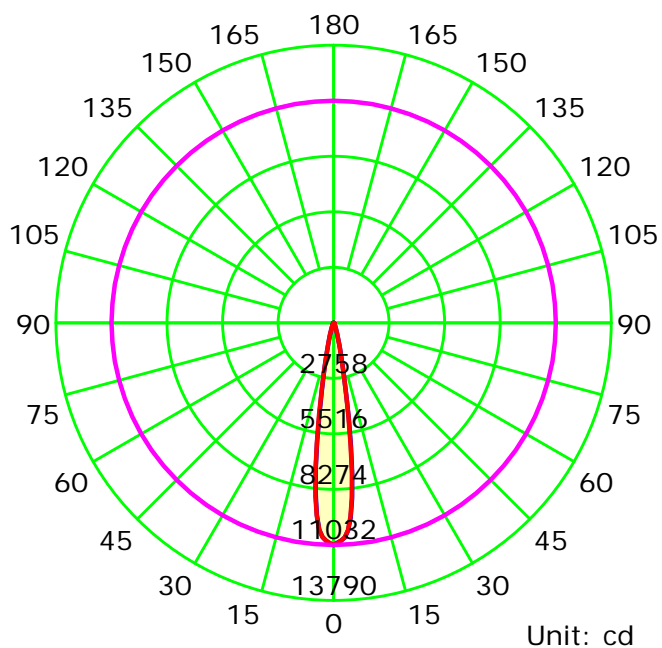
Max. Intensity: 11033.63 cd

Pos of Max. Intensity: H0 V0

Picture Of Luminaire



Luminous Intensity Distribution Curve



Average Diffuse Angle(50%): 16.8°

— C0-C180 — C90-C270 — G0

C Plane (°):0.0-180.0: 180.0

Test Lab:

Test Type: TYPE C

Temperature:

Operator:

Gamma Plane (°):0.0-90.0: 1.0

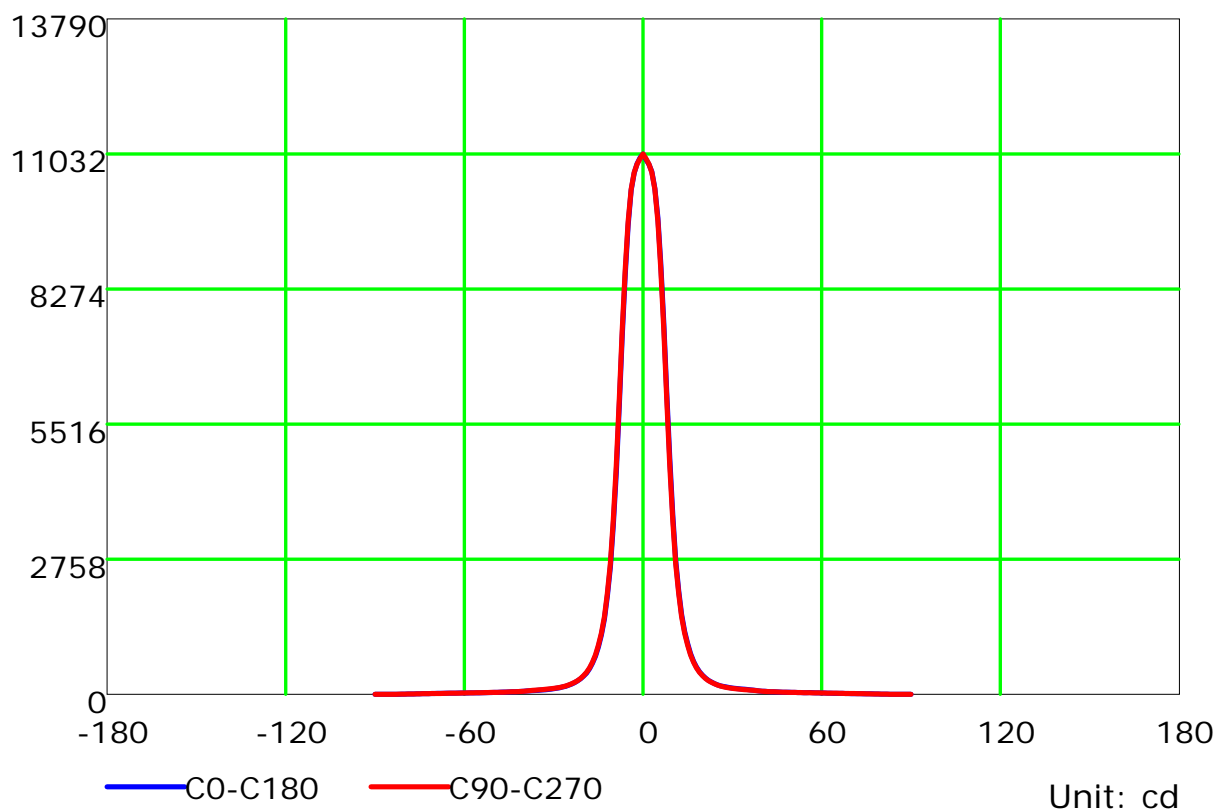
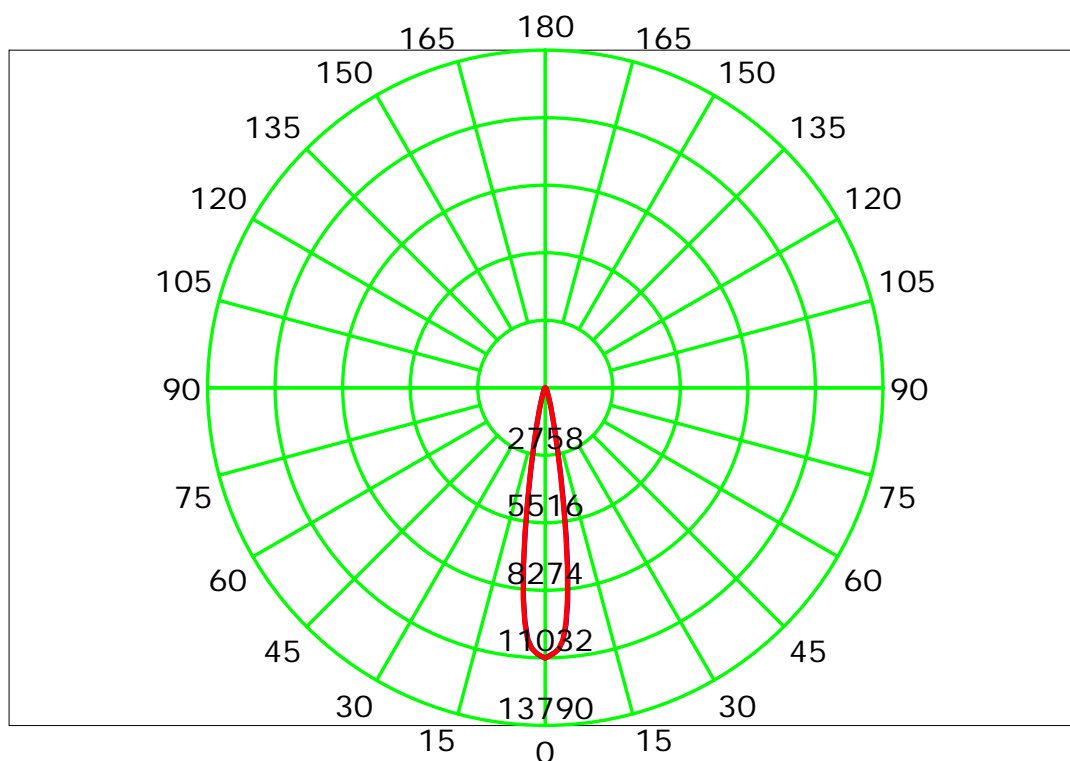
Test Device: CHL-6E

Distance: 3.000 m

Humidity:

Inspector:

## Luminous Intensity Distribution Curve



Unit: cd

C Plane (°): 0.0-180.0: 180.0

Test Lab:

Test Type: TYPE C

Temperature:

Operator:

Gamma Plane (°): 0.0-90.0: 1.0

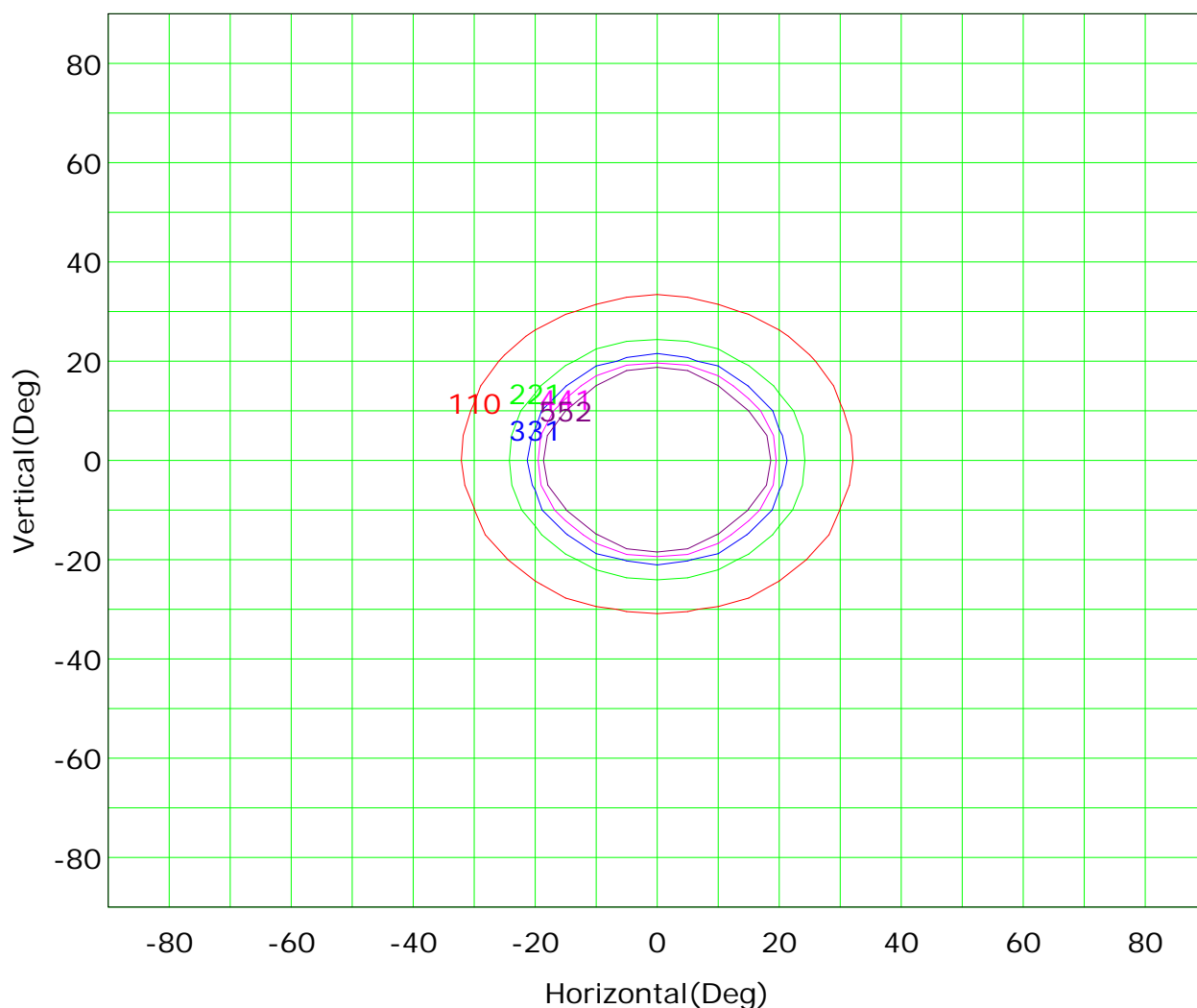
Test Device: CHL-6E

Distance: 3.000 m

Humidity:

Inspector:

## Isocandela (rectangle)



Imax (100%): 11034 cd

( 1%): 110 cd

( 3%): 331 cd

( 5%): 552 cd

( 2%): 221 cd

( 4%): 441 cd

C Plane (°): 0.0-180.0: 180.0

Test Lab:

Test Type: TYPE C

Temperature:

Operator:

Gamma Plane (°): 0.0-90.0: 1.0

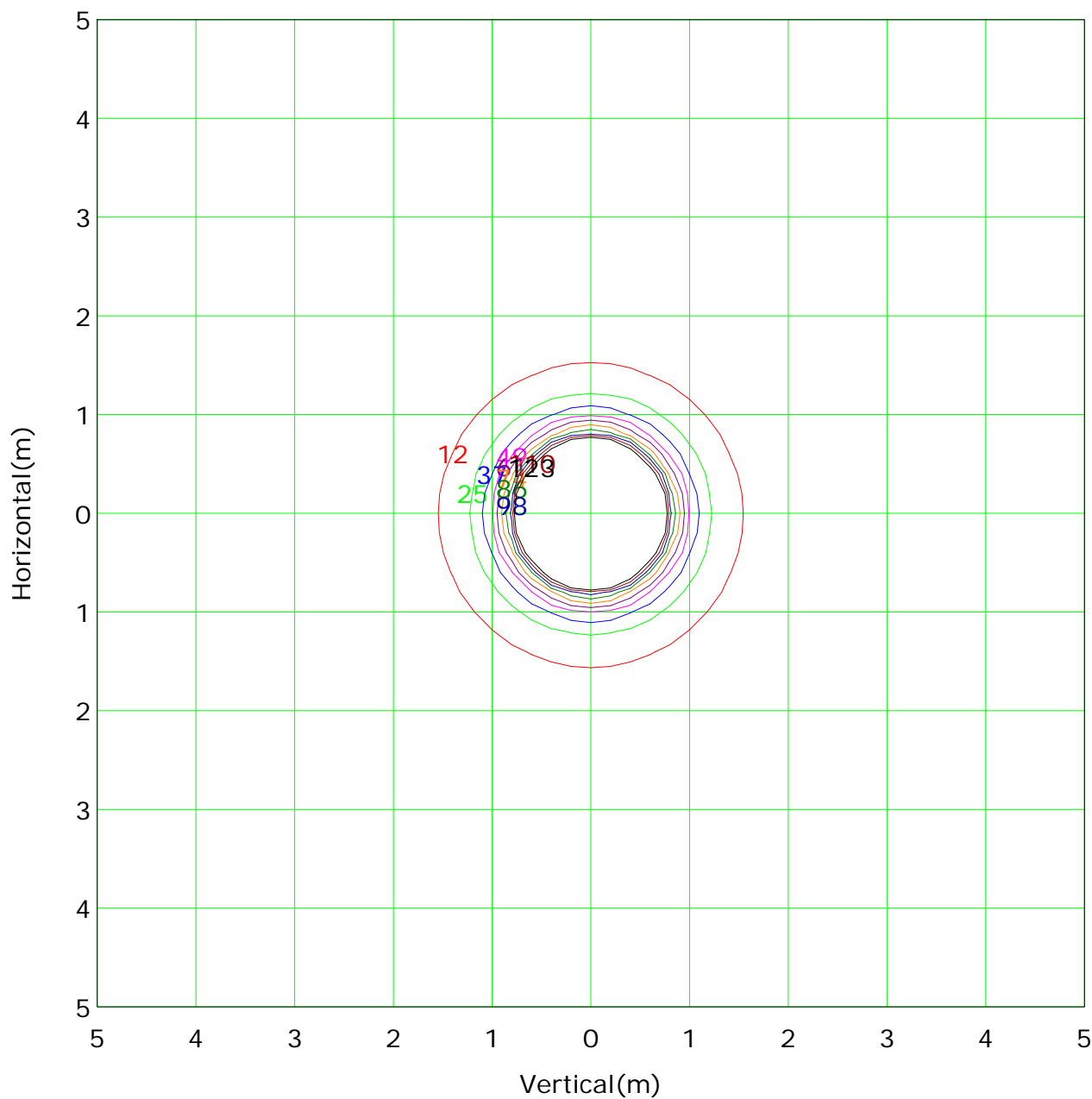
Test Device: CHL-6E

Distance: 3.000 m

Humidity:

Inspector:

## IsoLux Plot



Mounting Height: 3m		Max Lux(100%): 1226 lx	
— ( 1%):	12 lx	— ( 2%):	25 lx
— ( 3%):	37 lx	— ( 4%):	49 lx
— ( 5%):	61 lx	— ( 6%):	74 lx
— ( 7%):	86 lx	— ( 8%):	98 lx
— ( 9%):	110 lx	— (10%):	123 lx

C Plane (°):0.0-180.0: 180.0

Test Lab:

Test Type: TYPE C

Temperature:

Operator:

Gamma Plane (°):0.0-90.0: 1.0

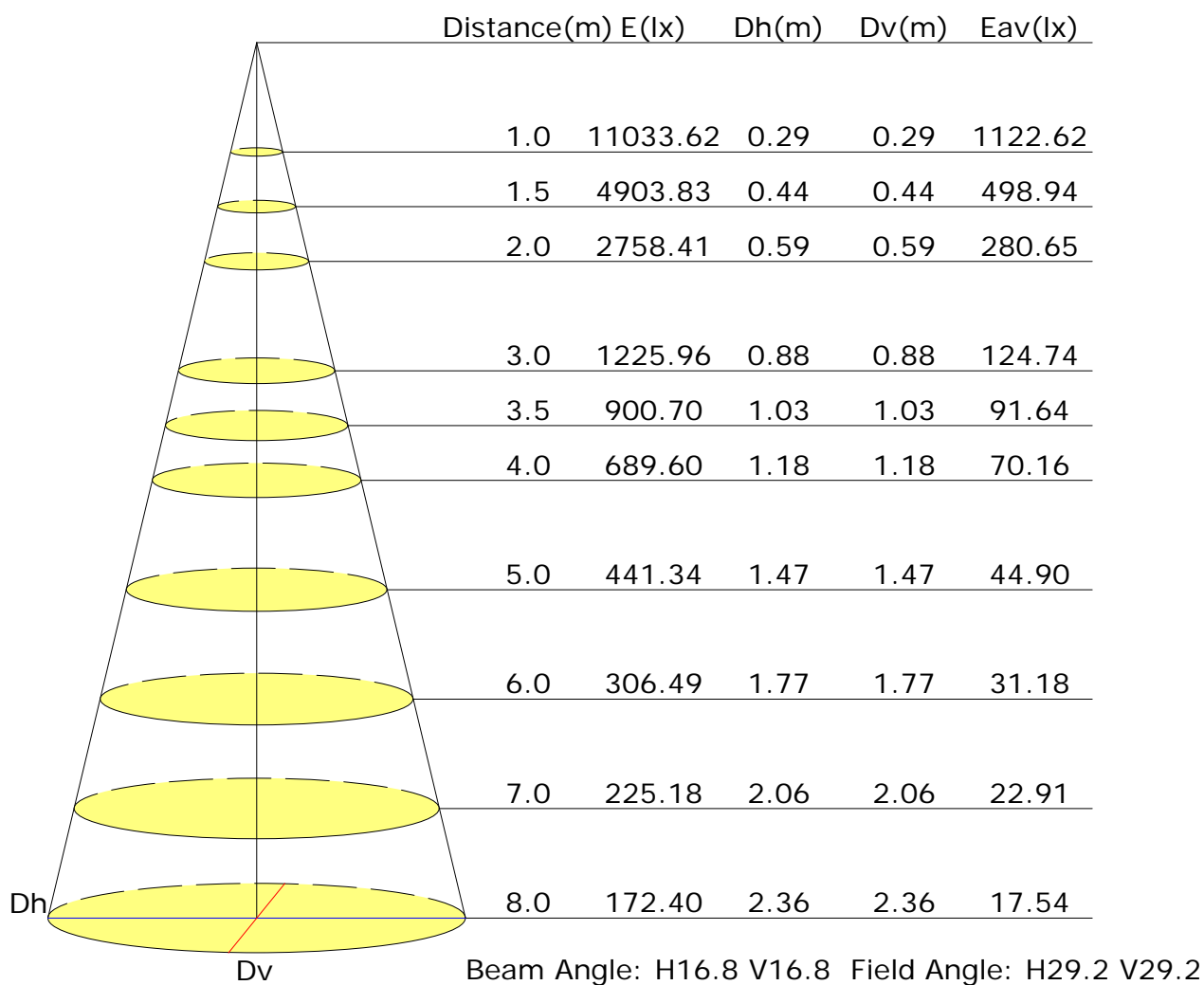
Test Device: CHL-6E

Distance: 3.000 m

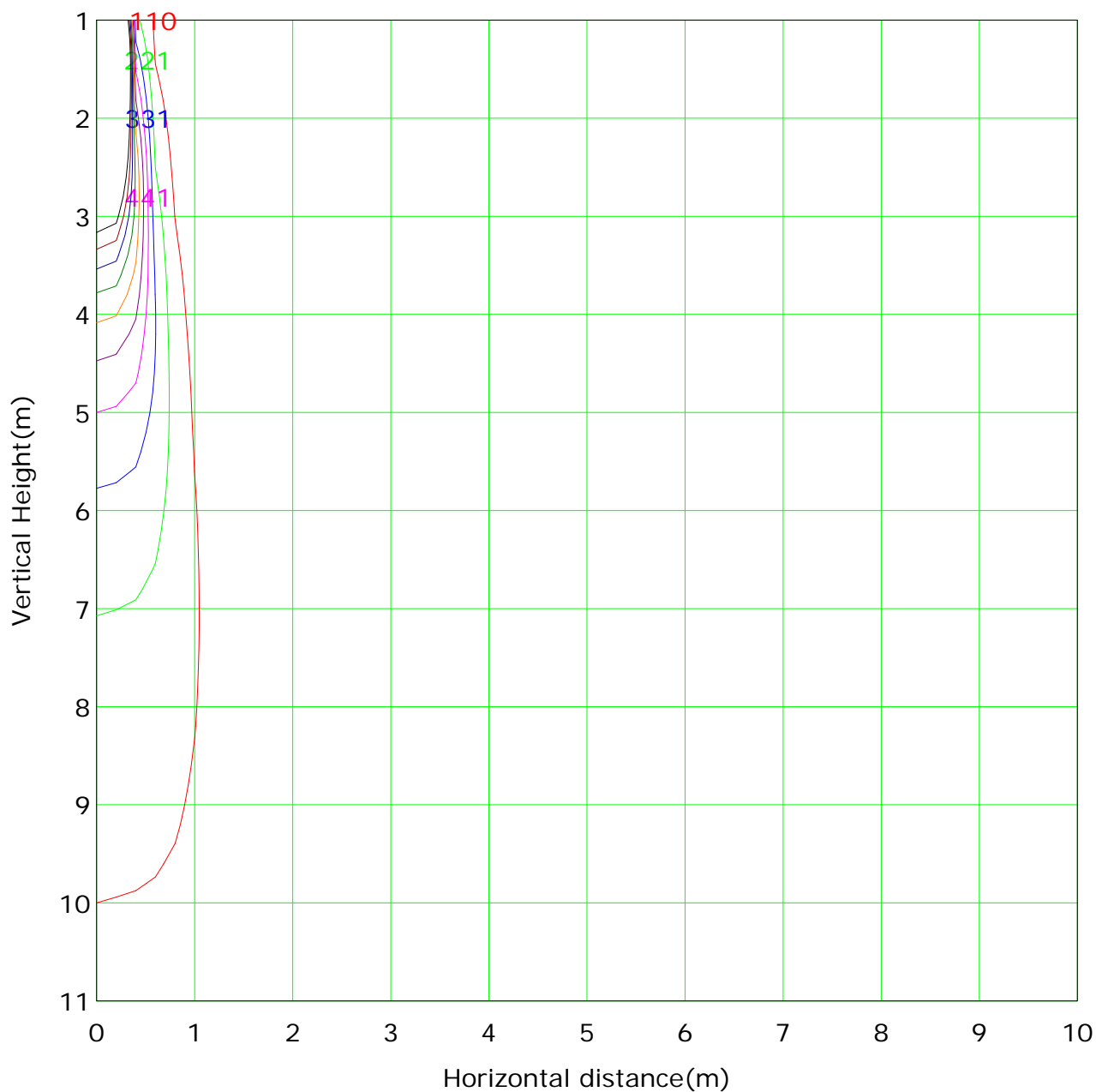
Humidity:

Inspector:

## Illuminance at a Distance



## Vertical IsoLux Plot



Lowest(m): 1m    Highest(m): 11    Max Lux: 11034	
( 1%): 110 lx	( 2%): 221 lx
( 3%): 331 lx	( 4%): 441 lx
( 5%): 552 lx	( 6%): 662 lx
( 7%): 772 lx	( 8%): 883 lx
( 9%): 993 lx	(10%): 1103 lx

C Plane (°):0.0-180.0: 180.0

Test Lab:

Test Type: TYPE C

Temperature:

Operator:

Gamma Plane (°):0.0-90.0: 1.0

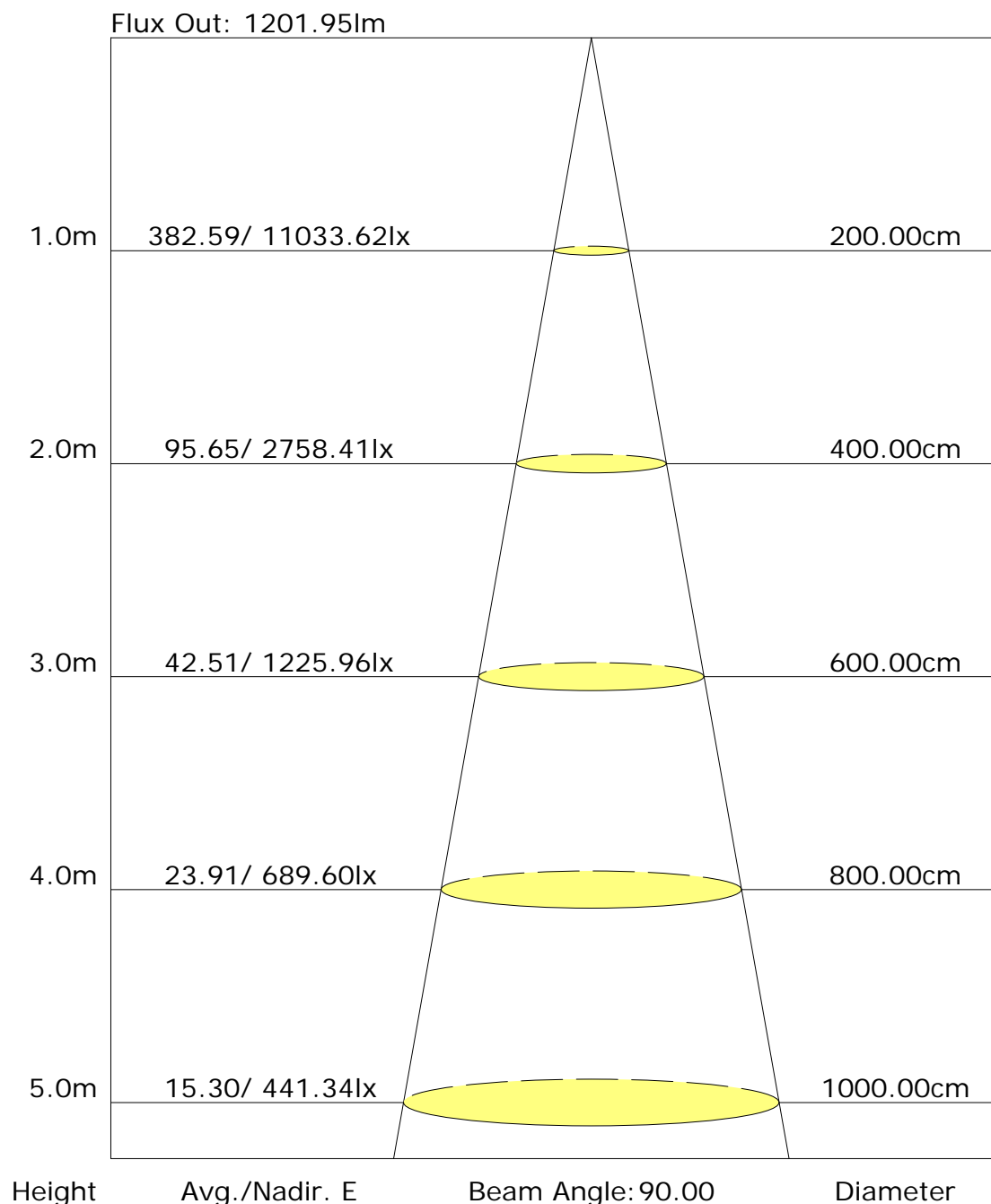
Test Device: CHL-6E

Distance: 3.000 m

Humidity:

Inspector:

## The average illuminance effective figure



C Plane (°): 0.0-180.0: 180.0

Test Lab:

Test Type: TYPE C

Temperature:

Operator:

Gamma Plane (°): 0.0-90.0: 1.0

Test Device: CHL-6E

Distance: 3.000 m

Humidity:

Inspector:

## Candlepower Table

Unit: cd

GVC	C0.0	C180.0								
G0.0	11033.6	11033.6								
G1.0	10923.4	10961.3								
G2.0	10823.1	10836.6								
G3.0	10675.8	10645.0								
G4.0	10334.2	10298.0								
G5.0	9732.4	9576.9								
G6.0	8796.2	8577.5								
G7.0	7569.9	7307.0								
G8.0	6180.1	5909.9								
G9.0	4831.8	4519.2								
G10.0	3660.7	3432.1								
G11.0	2746.2	2597.1								
G12.0	2114.6	1997.1								
G13.0	1632.9	1540.7								
G14.0	1286.8	1214.5								
G15.0	1033.8	966.9								
G16.0	833.2	780.8								
G17.0	673.2	635.3								
G18.0	556.7	524.1								
G19.0	463.6	433.8								
G20.0	390.4	369.6								
G21.0	334.4	317.2								
G22.0	287.4	274.7								
G23.0	252.1	239.5								
G24.0	220.5	211.5								
G25.0	195.2	187.1								
G26.0	176.2	166.3								
G27.0	162.7	150.9								
G28.0	150.9	136.4								
G29.0	138.3	126.5								
G30.0	130.1	115.7								
G31.0	122.9	106.6								
G32.0	116.6	99.4								
G33.0	110.3	94.0								
G34.0	104.8	88.6								
G35.0	101.2	84.9								
G36.0	93.1	81.3								

C Plane (°): 0.0-180.0: 180.0

Test Lab:

Test Type: TYPE C

Temperature:

Operator:

Gamma Plane (°): 0.0-90.0: 1.0

Test Device: CHL-6E

Distance: 3.000 m

Humidity:

Inspector:



## Candlepower Table (Continue 1)

Unit: cd

GVC	C0.0	C180.0								
G37.0	86.8	77.7								
G38.0	78.6	73.2								
G39.0	69.6	69.6								
G40.0	65.1	65.1								
G41.0	62.3	60.5								
G42.0	57.8	57.8								
G43.0	54.2	55.1								
G44.0	53.3	53.3								
G45.0	50.6	50.6								
G46.0	47.0	47.0								
G47.0	45.2	46.1								
G48.0	44.3	44.3								
G49.0	43.4	41.6								
G50.0	39.8	39.8								
G51.0	39.8	38.9								
G52.0	37.0	36.2								
G53.0	37.0	35.2								
G54.0	34.3	34.3								
G55.0	35.2	32.5								
G56.0	37.0	30.7								
G57.0	34.3	30.7								
G58.0	32.5	29.8								
G59.0	31.6	28.9								
G60.0	28.9	26.2								
G61.0	28.0	28.0								
G62.0	24.4	27.1								
G63.0	23.5	24.4								
G64.0	21.7	25.3								
G65.0	21.7	25.3								
G66.0	20.8	23.5								
G67.0	19.9	21.7								
G68.0	17.2	21.7								
G69.0	17.2	21.7								
G70.0	15.4	19.0								
G71.0	16.3	17.2								
G72.0	14.5	14.5								
G73.0	13.6	14.5								

C Plane (°): 0.0-180.0: 180.0

Test Lab:

Test Type: TYPE C

Temperature:

Operator:

Gamma Plane (°): 0.0-90.0: 1.0

Test Device: CHL-6E

Distance: 3.000 m

Humidity:

Inspector:

