

Report No.:32.08012-ECO Track Light

Test Time: 2022-04-28 18:44

## Luminaire Property

Luminaire Category: Bridgelux V13C 3000K CRI90

Voltage: 219.4 V

Current: 0.282 A

Power: 35.90 W

Power Factor: 0.578

## Photometric Results

CIE Class: Direct

Measurement Flux: 3101.6 lm

Downward Ratio: 100%

Total Rated Lamp Lumens: 3101.6 lm

Efficiency: 100%

Upward Ratio: 0%

Horizontal Diffuse Angle(25%,50%,75%,100%): H22.4,H16.6,H11.5,H1

Vertical Diffuse Angle(25%,50%,75%,100%): V22.4,V16.6,V11.5,V1

Luminaire Efficacy Rating (LER): 86

Central Intensity: 26595.45 cd

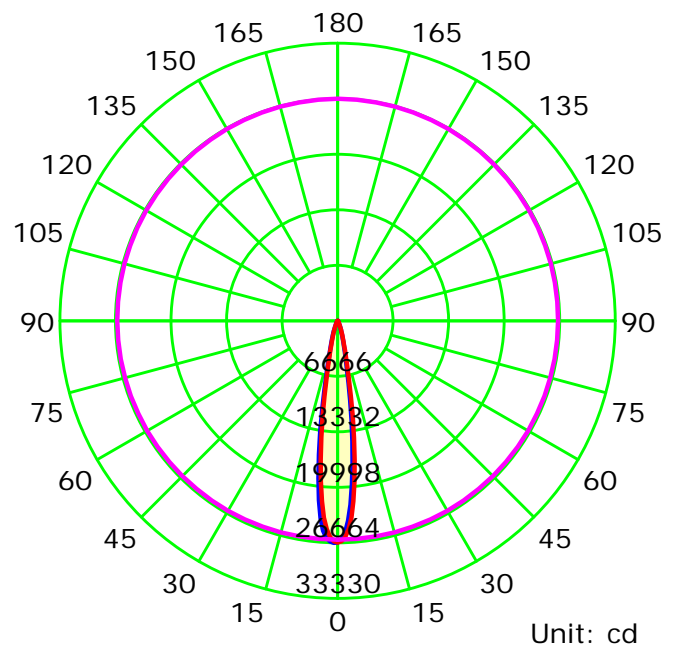
Max. Intensity: 26665.03 cd

Pos of Max. Intensity: H180 V1

Picture Of Luminaire



Luminous Intensity Distribution Curve



Average Diffuse Angle(50%): 16.6°

— C0-C180 — C90-C270 — G1

C Plane (°):0.0-180.0: 180.0

Test Lab:

Test Type: TYPE C

Temperature:

Operator:

Gamma Plane (°):0.0-90.0: 1.0

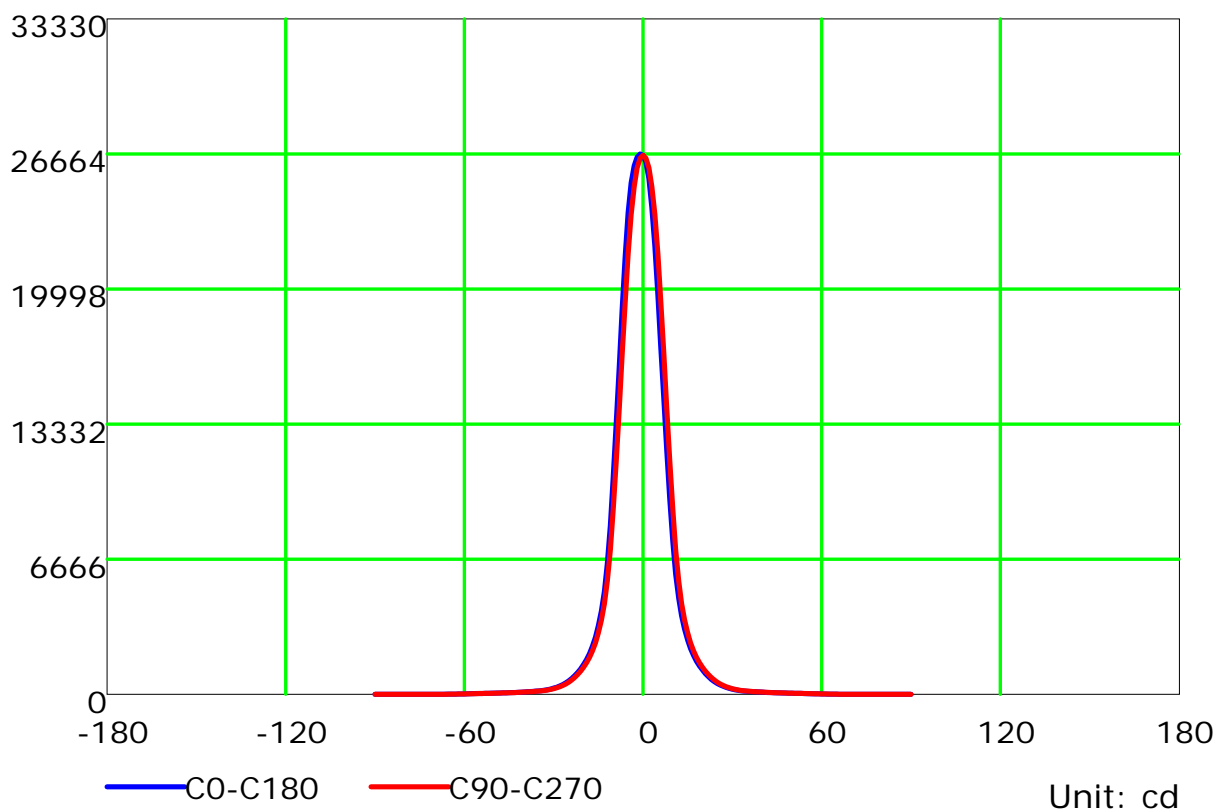
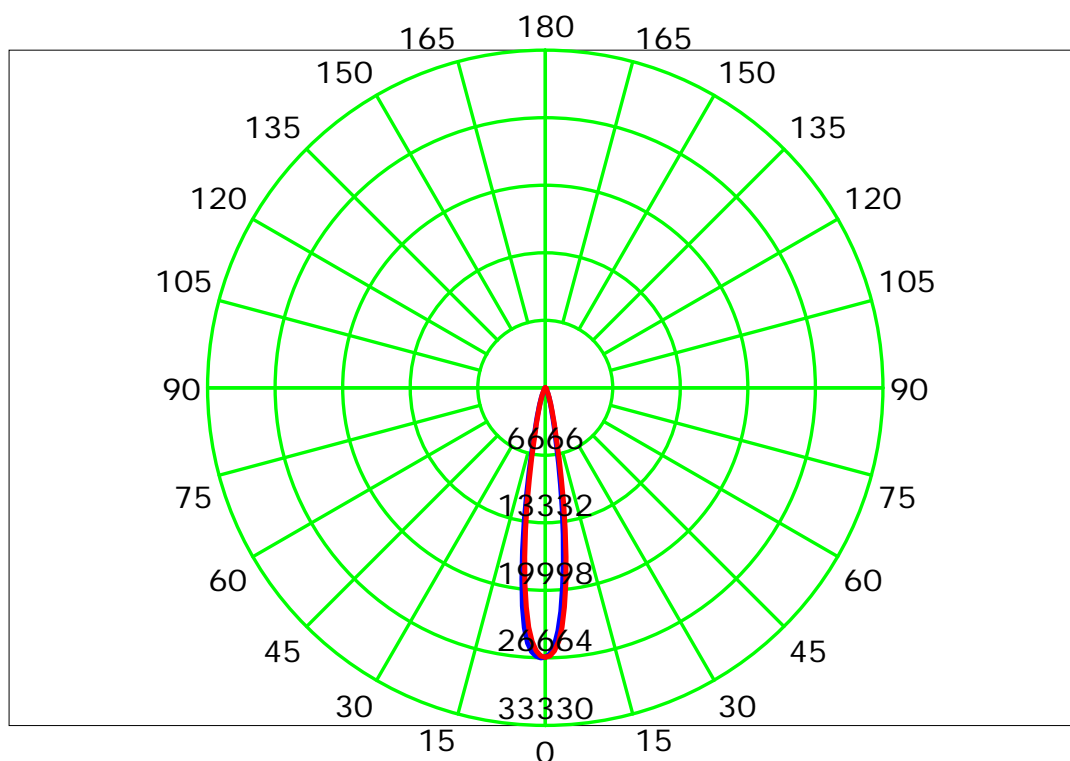
Test Device: CHL-6E

Distance: 3.000 m

Humidity:

Inspector:

## Luminous Intensity Distribution Curve



Unit: cd

C Plane (°):0.0-180.0: 180.0

Test Lab:

Test Type: TYPE C

Temperature:

Operator:

Gamma Plane (°):0.0-90.0:1.0

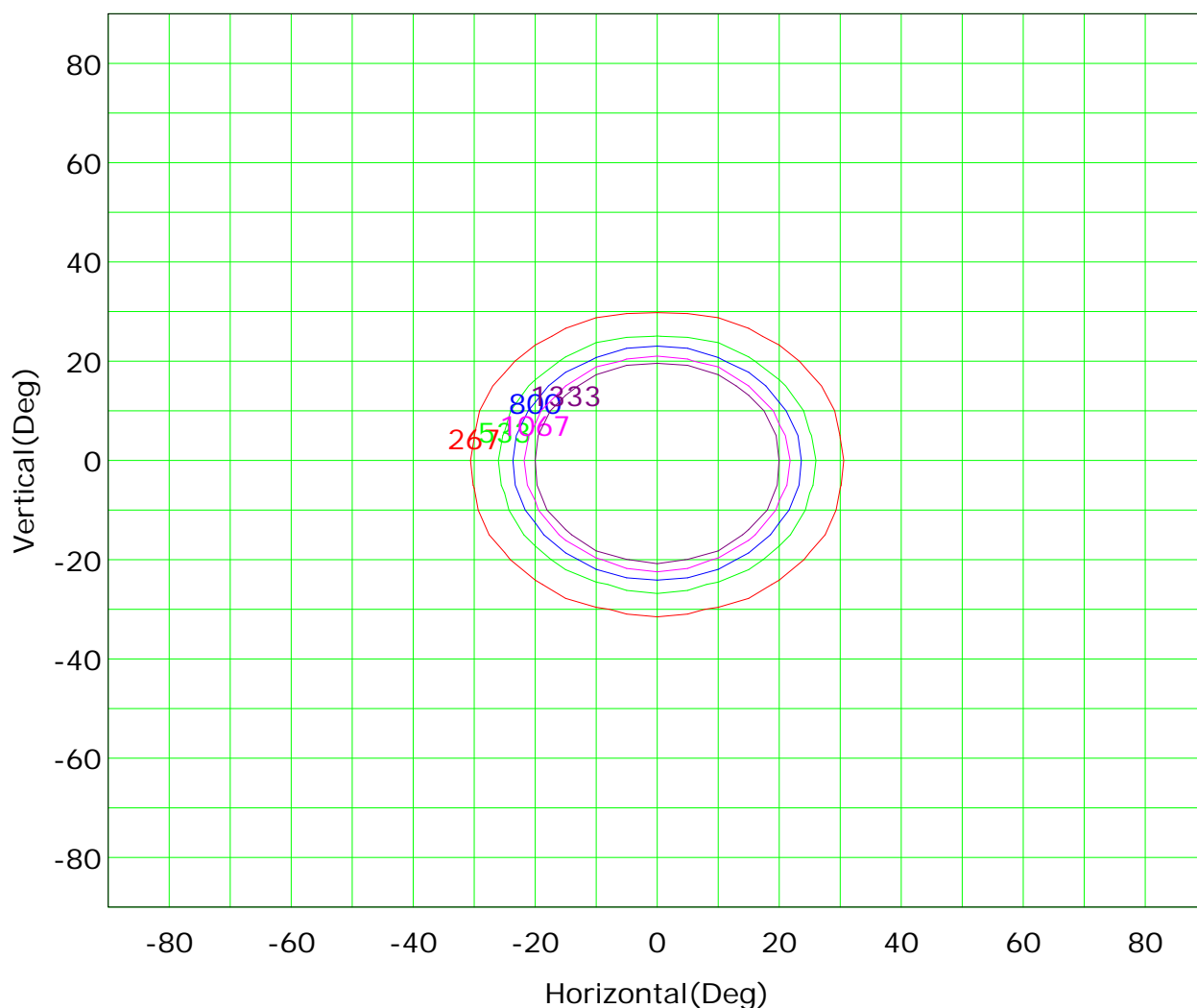
Test Device: CHL-6E

Distance: 3.000 m

Humidity:

Inspector:

## Isocandela (rectangle)



Imax (100%): 26665 cd

( 1%): 267 cd

( 3%): 800 cd

( 5%): 1333 cd

( 2%): 533 cd

( 4%): 1067 cd

C Plane (°): 0.0-180.0: 180.0

Test Lab:

Test Type: TYPE C

Temperature:

Operator:

Gamma Plane (°): 0.0-90.0: 1.0

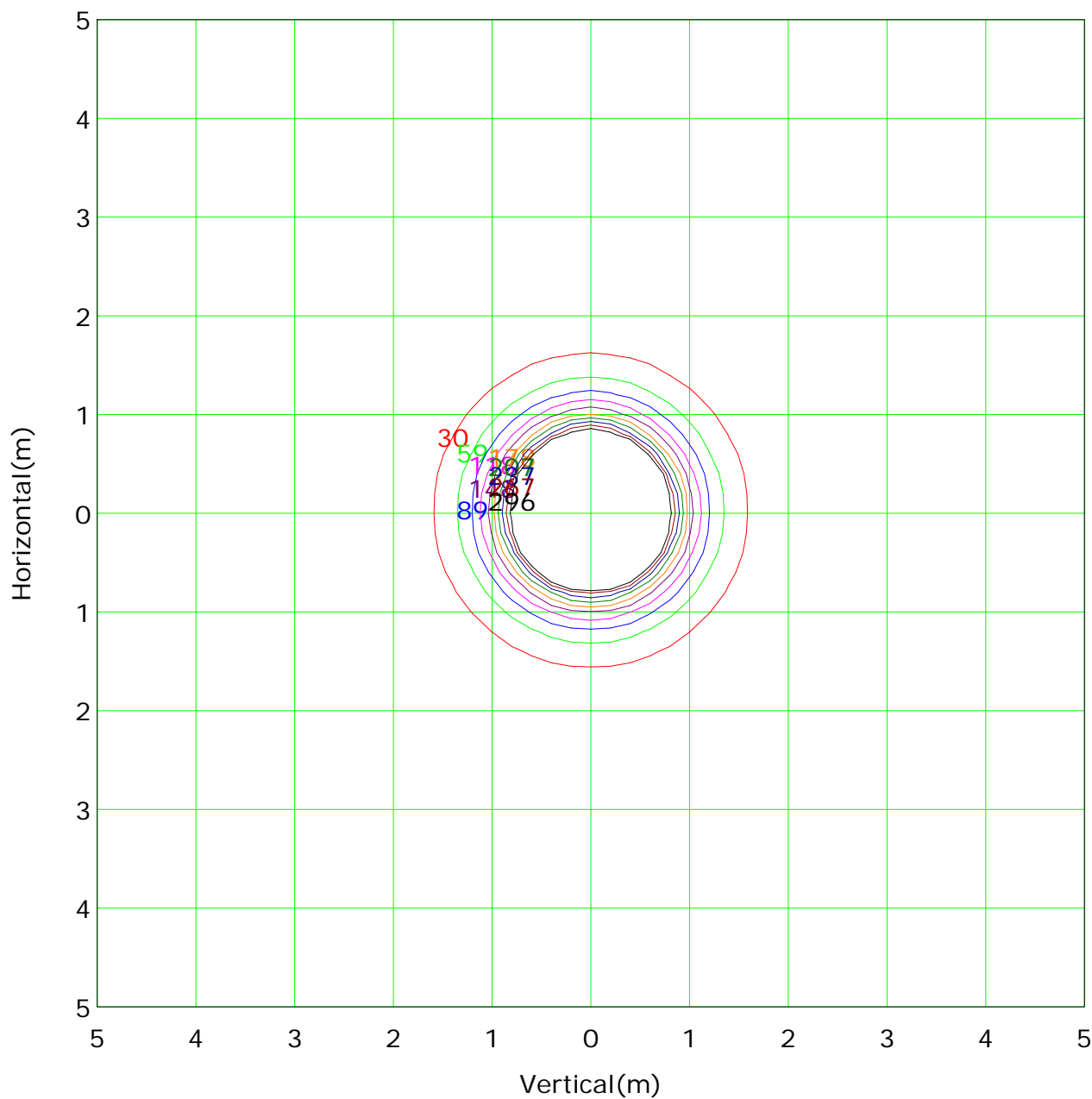
Test Device: CHL-6E

Distance: 3.000 m

Humidity:

Inspector:

## IsoLux Plot



Mounting Height: 3m		Max Lux(100%): 2961 lx	
— ( 1%):	30 lx	— ( 2%):	59 lx
— ( 3%):	89 lx	— ( 4%):	118 lx
— ( 5%):	148 lx	— ( 6%):	178 lx
— ( 7%):	207 lx	— ( 8%):	237 lx
— ( 9%):	267 lx	— (10%):	296 lx

C Plane (°):0.0-180.0: 180.0

Test Lab:

Test Type: TYPE C

Temperature:

Operator:

Gamma Plane (°):0.0-90.0: 1.0

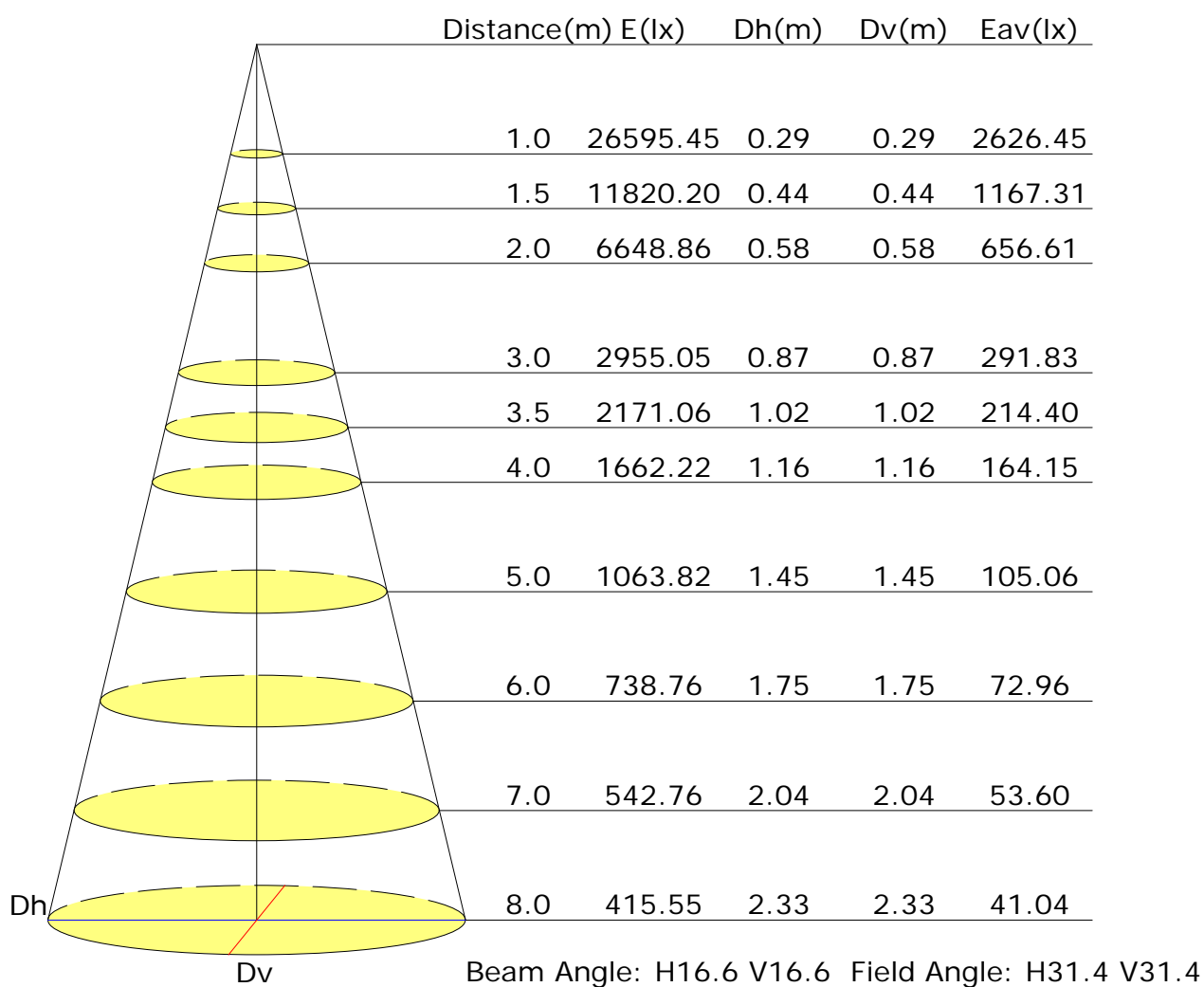
Test Device: CHL-6E

Distance: 3.000 m

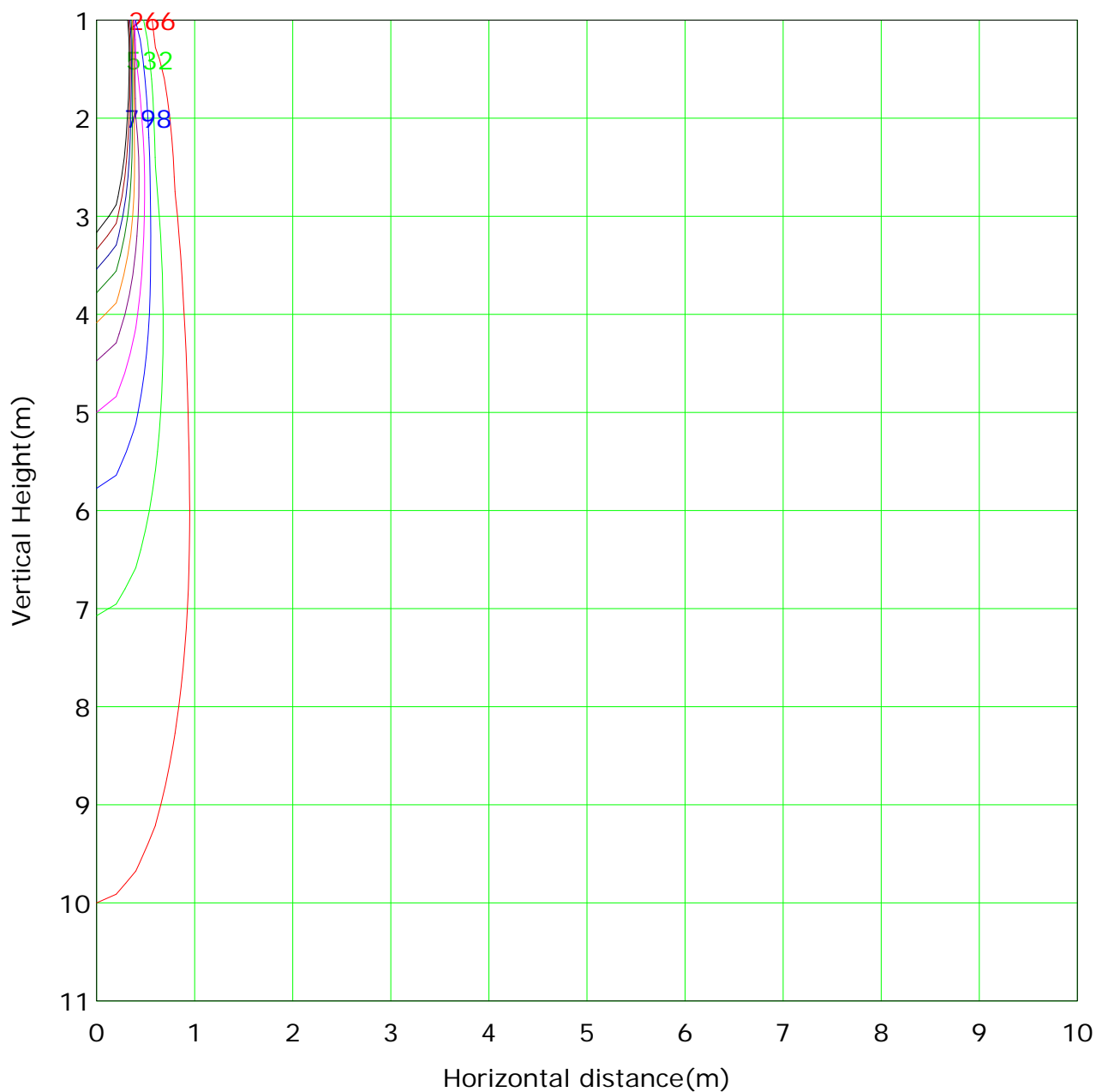
Humidity:

Inspector:

## Illuminance at a Distance



## Vertical IsoLux Plot



Lowest(m): 1m    Highest(m): 11    Max Lux: 26595	
( 1%): 266 lx	( 2%): 532 lx
( 3%): 798 lx	( 4%): 1064 lx
( 5%): 1330 lx	( 6%): 1596 lx
( 7%): 1862 lx	( 8%): 2128 lx
( 9%): 2394 lx	( 10%): 2660 lx

C Plane (°):0.0-180.0: 180.0

Test Lab:

Test Type: TYPE C

Temperature:

Operator:

Gamma Plane (°):0.0-90.0: 1.0

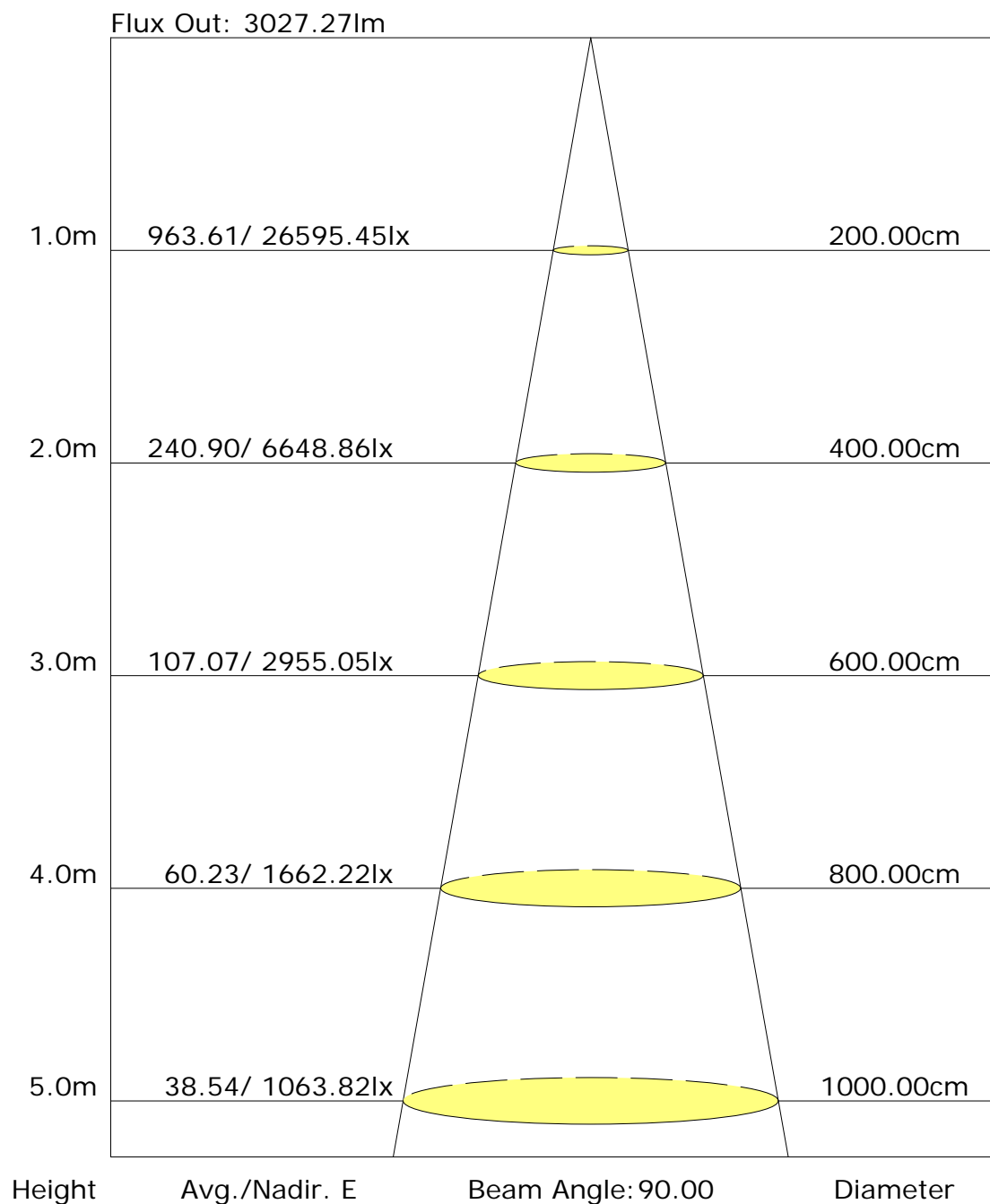
Test Device: CHL-6E

Distance: 3.000 m

Humidity:

Inspector:

## The average illuminance effective figure



C Plane (°): 0.0-180.0: 180.0

Test Lab:

Test Type: TYPE C

Temperature:

Operator:

Gamma Plane (°): 0.0-90.0: 1.0

Test Device: CHL-6E

Distance: 3.000 m

Humidity:

Inspector:

## Candlepower Table

Unit: cd

GVC	C0.0	C180.0								
G0.0	26595.4	26595.4								
G1.0	26263.8	26665.0								
G2.0	25455.9	26502.4								
G3.0	24041.7	26082.2								
G4.0	22133.2	25248.1								
G5.0	19710.5	23760.7								
G6.0	17145.0	21648.8								
G7.0	14605.8	19027.3								
G8.0	12099.0	16217.9								
G9.0	9664.6	13425.6								
G10.0	7573.5	10722.8								
G11.0	5937.9	8319.0								
G12.0	4752.3	6440.3								
G13.0	3880.3	5081.3								
G14.0	3210.7	4109.8								
G15.0	2683.9	3383.3								
G16.0	2260.9	2817.6								
G17.0	1920.3	2371.2								
G18.0	1641.9	2008.8								
G19.0	1404.3	1713.3								
G20.0	1201.0	1463.9								
G21.0	1026.6	1254.3								
G22.0	874.7	1071.7								
G23.0	741.9	917.2								
G24.0	630.8	779.8								
G25.0	536.8	661.5								
G26.0	460.0	563.9								
G27.0	395.8	480.7								
G28.0	339.8	413.0								
G29.0	293.7	355.1								
G30.0	253.9	308.1								
G31.0	224.1	267.5								
G32.0	199.7	234.9								
G33.0	178.9	209.6								
G34.0	164.5	188.9								
G35.0	151.8	171.7								
G36.0	141.9	159.0								

C Plane (°): 0.0-180.0: 180.0

Test Lab:

Test Type: TYPE C

Temperature:

Operator:

Gamma Plane (°): 0.0-90.0: 1.0

Test Device: CHL-6E

Distance: 3.000 m

Humidity:

Inspector:



## Candlepower Table (Continue 1)

Unit: cd

GVC	C0.0	C180.0								
G37.0	134.6	146.4								
G38.0	127.4	137.4								
G39.0	121.1	130.1								
G40.0	113.0	118.4								
G41.0	101.2	106.6								
G42.0	94.0	99.4								
G43.0	88.6	94.0								
G44.0	82.2	88.6								
G45.0	76.8	82.2								
G46.0	74.1	78.6								
G47.0	69.6	73.2								
G48.0	65.1	69.6								
G49.0	60.5	65.1								
G50.0	57.8	59.6								
G51.0	52.4	57.8								
G52.0	50.6	53.3								
G53.0	47.9	50.6								
G54.0	43.4	47.0								
G55.0	38.0	43.4								
G56.0	35.2	40.7								
G57.0	30.7	35.2								
G58.0	28.0	32.5								
G59.0	25.3	28.0								
G60.0	21.7	23.5								
G61.0	19.0	21.7								
G62.0	14.5	19.9								
G63.0	11.8	14.5								
G64.0	9.9	11.8								
G65.0	9.0	9.9								
G66.0	6.3	8.1								
G67.0	4.5	6.3								
G68.0	2.7	4.5								
G69.0	0.9	2.7								
G70.0	0.0	0.9								
G71.0	0.0	0.0								
G72.0	0.0	0.0								
G73.0	0.0	0.0								

C Plane (°): 0.0-180.0: 180.0

Test Lab:

Test Type: TYPE C

Temperature:

Operator:

Gamma Plane (°): 0.0-90.0: 1.0

Test Device: CHL-6E

Distance: 3.000 m

Humidity:

Inspector:

