

Report No.: 32.05512-ECO Track Light

Test Time: 2022-04-26 20:55

## Luminaire Property

Luminaire Category: Bridgelux V6HD 3000K CRI90

Voltage: 216.5 V

Current: 0.069 A

Power: 14.60 W

Power Factor: 0.969

## Photometric Results

CIE Class: Direct

Measurement Flux: 955.4 lm

Downward Ratio: 100%

Total Rated Lamp Lumens: 955.4 lm

Efficiency: 100%

Upward Ratio: 0%

Horizontal Diffuse Angle(25%,50%,75%,100%): H45.2,H34.9,H24.6,H0

Vertical Diffuse Angle(25%,50%,75%,100%): V45.2,V34.9,V24.6,V0

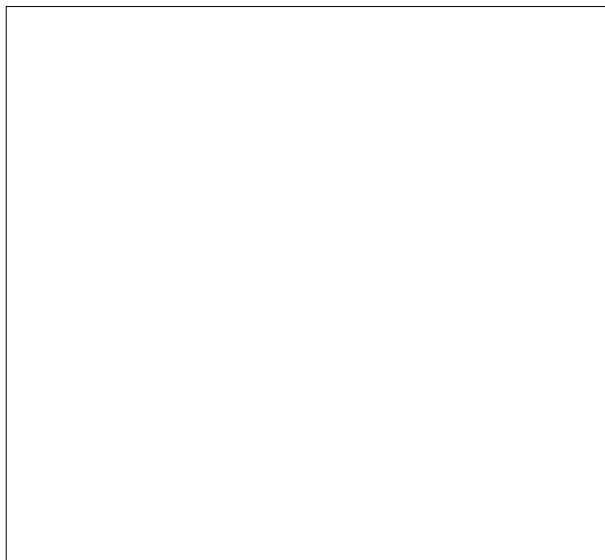
Luminaire Efficacy Rating (LER): 65

Central Intensity: 2648.6 cd

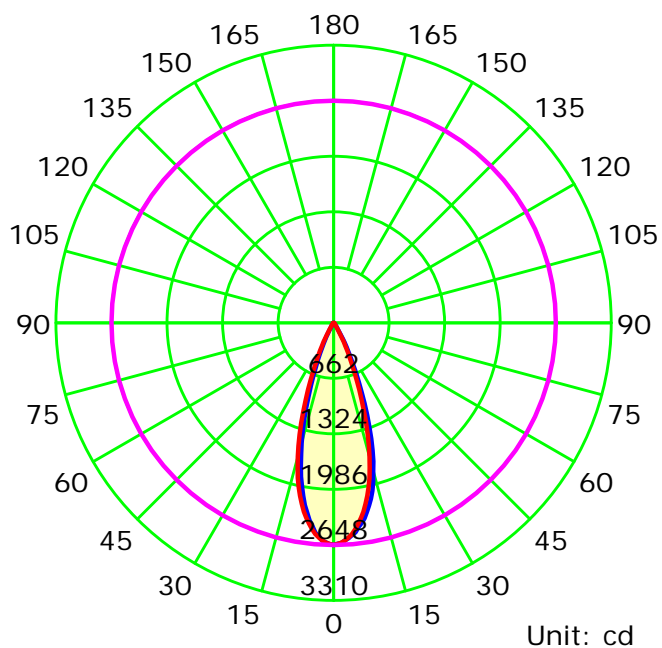
Max. Intensity: 2648.61 cd

Pos of Max. Intensity: H0 V0

Picture Of Luminaire



Luminous Intensity Distribution Curve



Average Diffuse Angle(50%): 34.9°

— C0-C180 — C90-C270 — G0

C Plane (°):0.0-180.0: 180.0

Test Lab:

Test Type: TYPE C

Temperature:

Operator:

Gamma Plane (°):0.0-90.0: 1.0

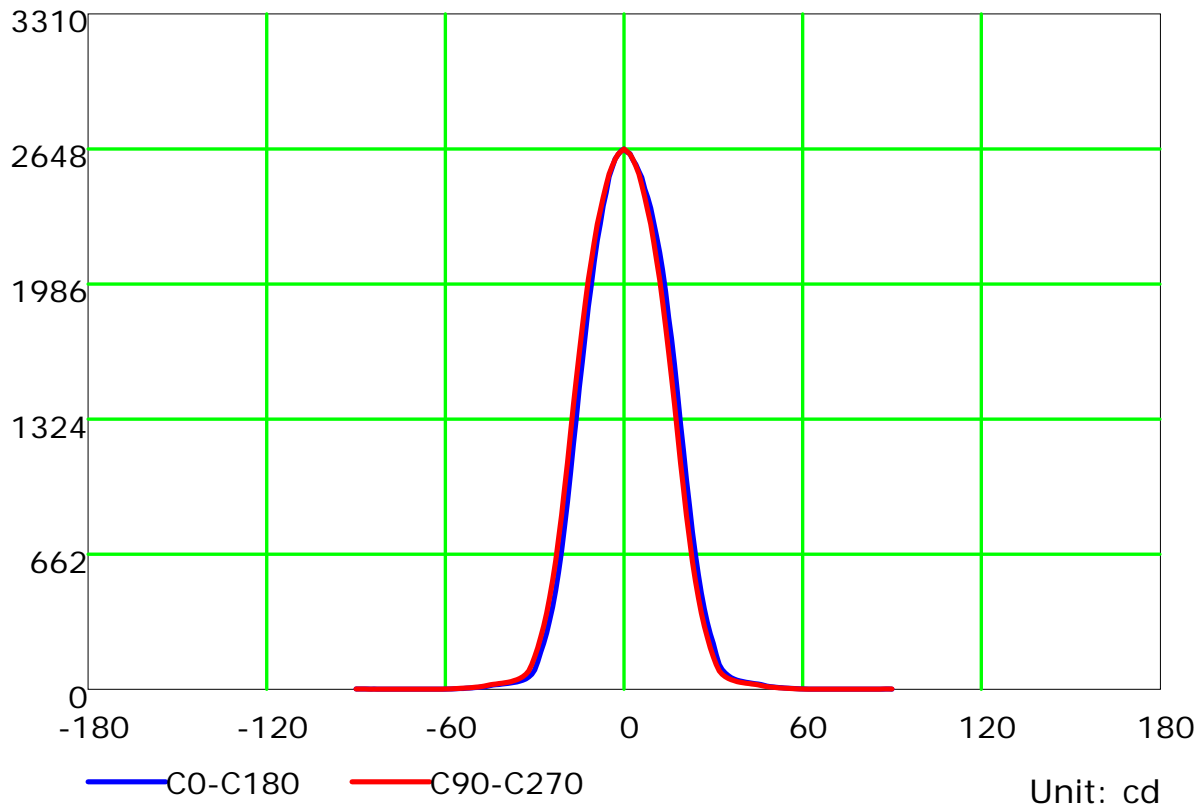
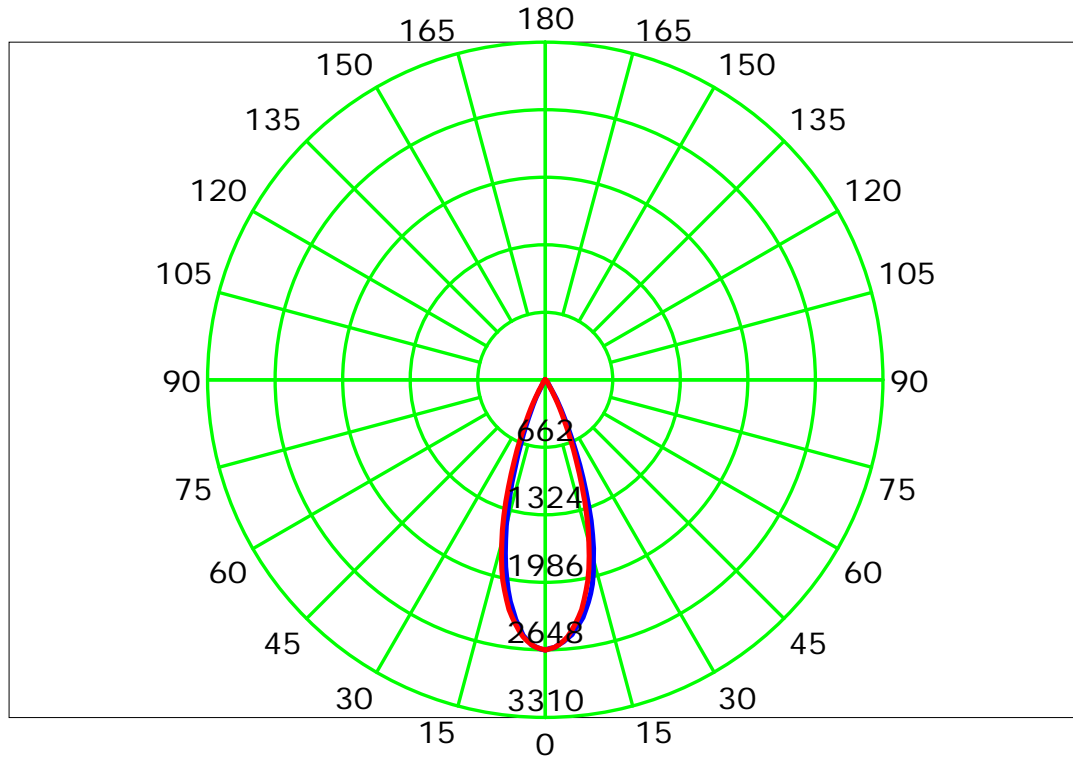
Test Device: CHL-6E

Distance: 3.000 m

Humidity:

Inspector:

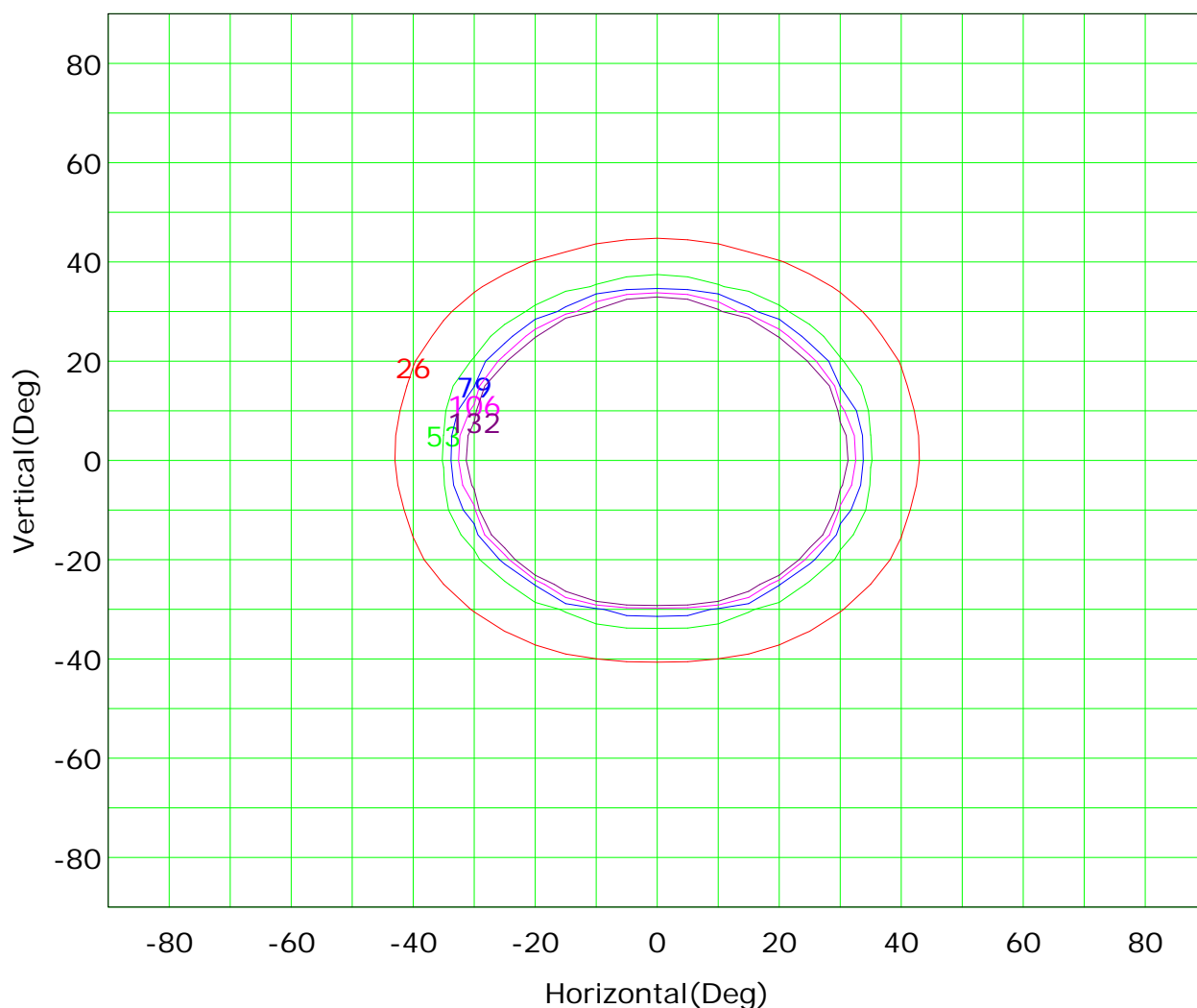
## Luminous Intensity Distribution Curve



C Plane (°): 0.0-180.0: 180.0  
Test Lab:  
Test Type: TYPE C  
Temperature:  
Operator:

Gamma Plane (°): 0.0-90.0: 1.0  
Test Device: CHL-6E  
Distance: 3.000 m  
Humidity:  
Inspector:

## Isocandela (rectangle)



I<sub>max</sub> (100%): 2649 cd

( 1%):	26 cd	( 2%):	53 cd
( 3%):	79 cd	( 4%):	106 cd
( 5%):	132 cd		

C Plane (°): 0.0-180.0: 180.0

Test Lab:

Test Type: TYPE C

Temperature:

Operator:

Gamma Plane (°): 0.0-90.0: 1.0

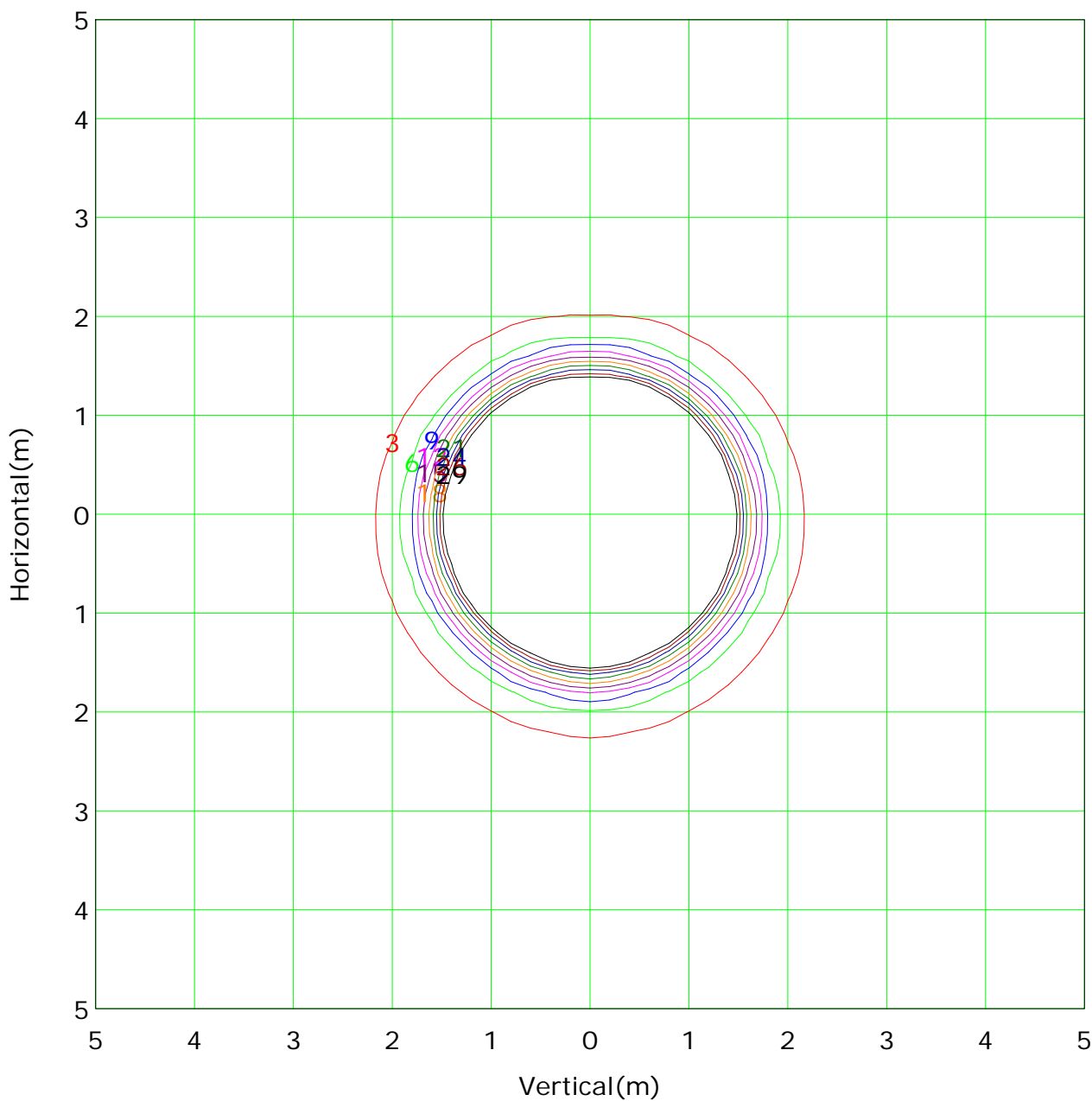
Test Device: CHL-6E

Distance: 3.000 m

Humidity:

Inspector:

## IsoLux Plot



Mounting Height: 3m		Max Lux(100%): 294 lx	
— ( 1%):	3 lx	— ( 2%):	6 lx
— ( 3%):	9 lx	— ( 4%):	12 lx
— ( 5%):	15 lx	— ( 6%):	18 lx
— ( 7%):	21 lx	— ( 8%):	24 lx
— ( 9%):	26 lx	— (10%):	29 lx

C Plane (°): 0.0-180.0: 180.0

Test Lab:

Test Type: TYPE C

Temperature:

Operator:

Gamma Plane (°): 0.0-90.0: 1.0

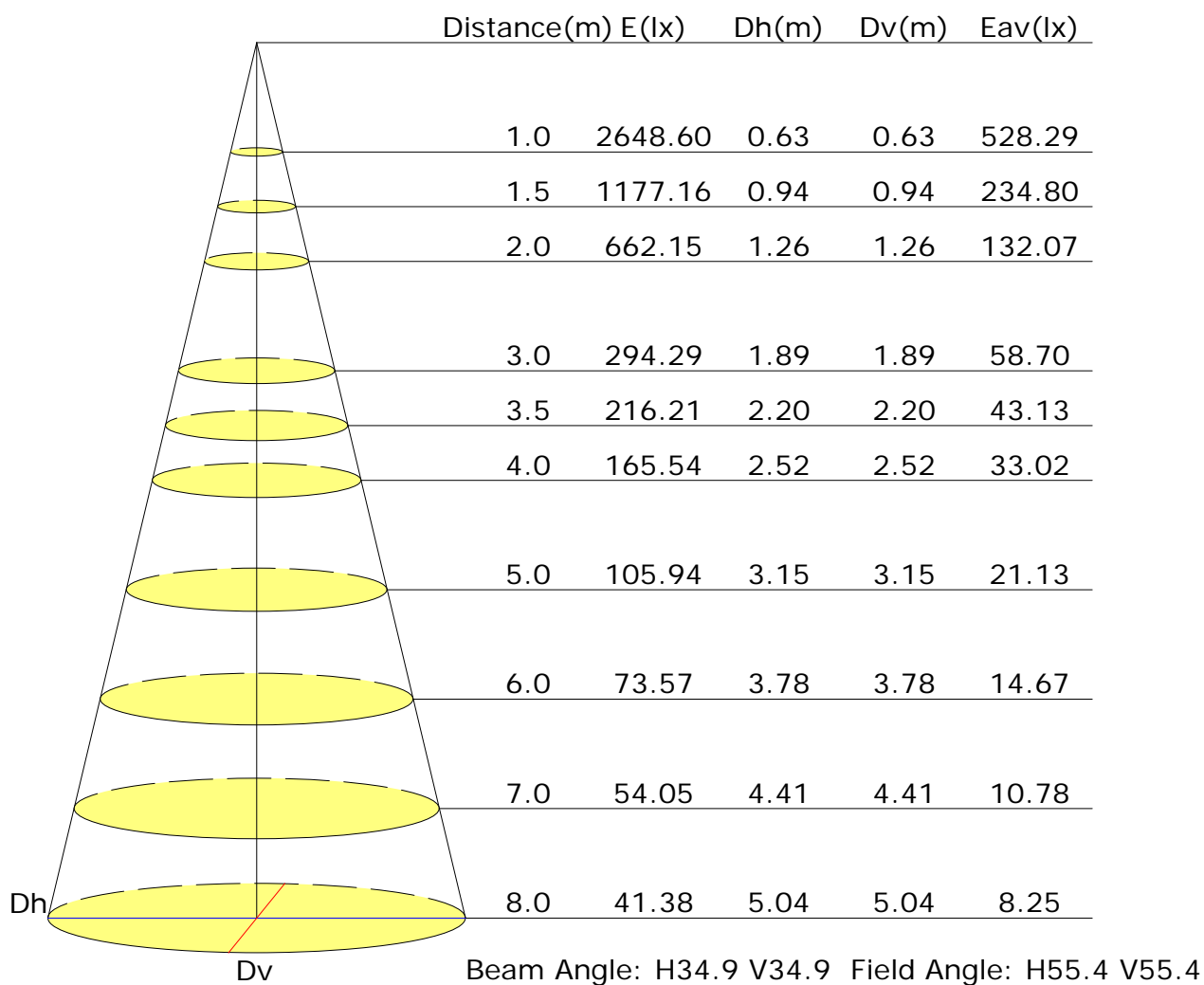
Test Device: CHL-6E

Distance: 3.000 m

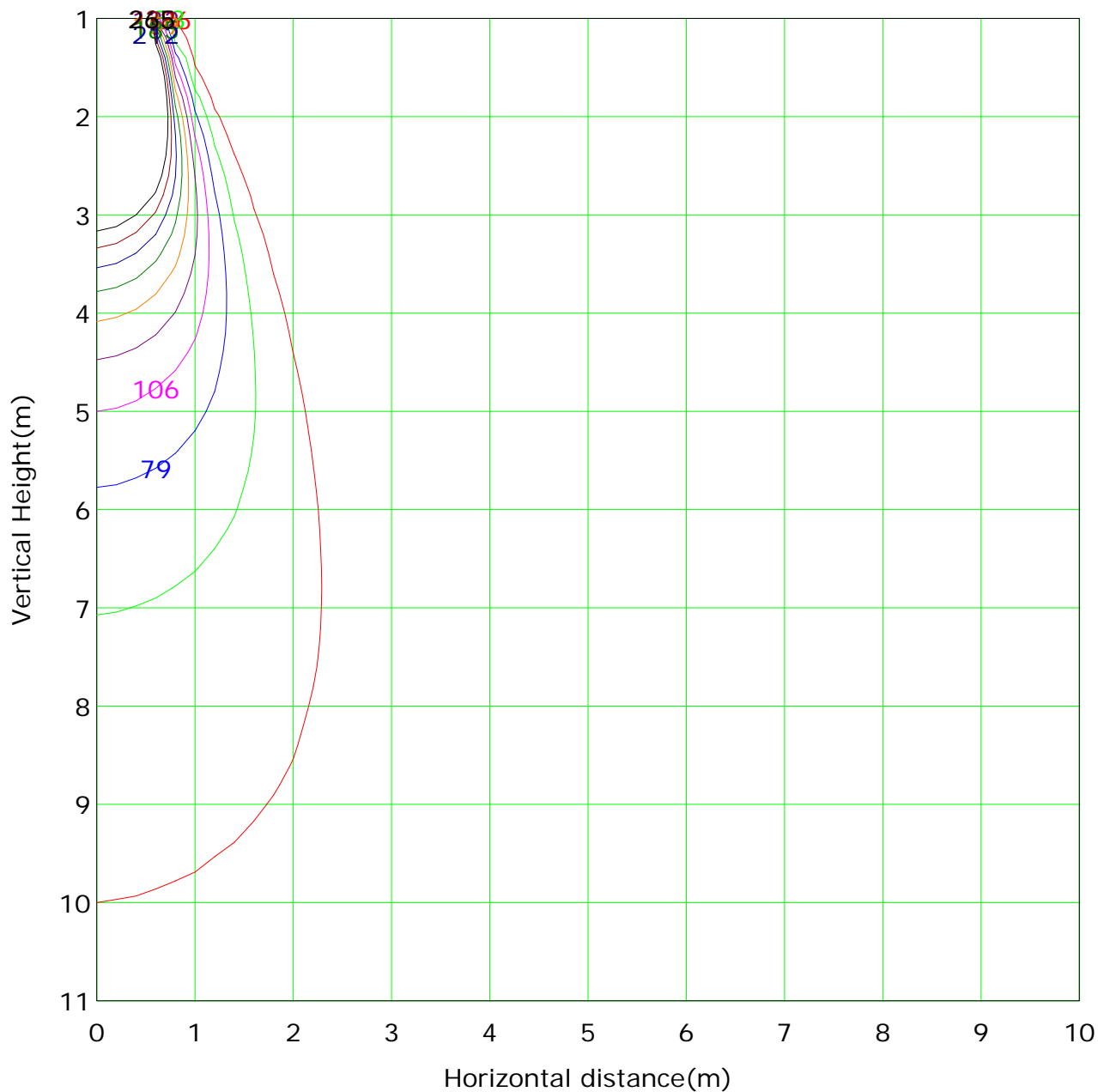
Humidity:

Inspector:

## Illuminance at a Distance



## Vertical IsoLux Plot



Lowest(m): 1m    Highest(m): 11    Max Lux: 2649	
( 1%): 26 lx	( 2%): 53 lx
( 3%): 79 lx	( 4%): 106 lx
( 5%): 132 lx	( 6%): 159 lx
( 7%): 185 lx	( 8%): 212 lx
( 9%): 238 lx	( 10%): 265 lx

C Plane (°): 0.0-180.0: 180.0

Test Lab:

Test Type: TYPE C

Temperature:

Operator:

Gamma Plane (°): 0.0-90.0: 1.0

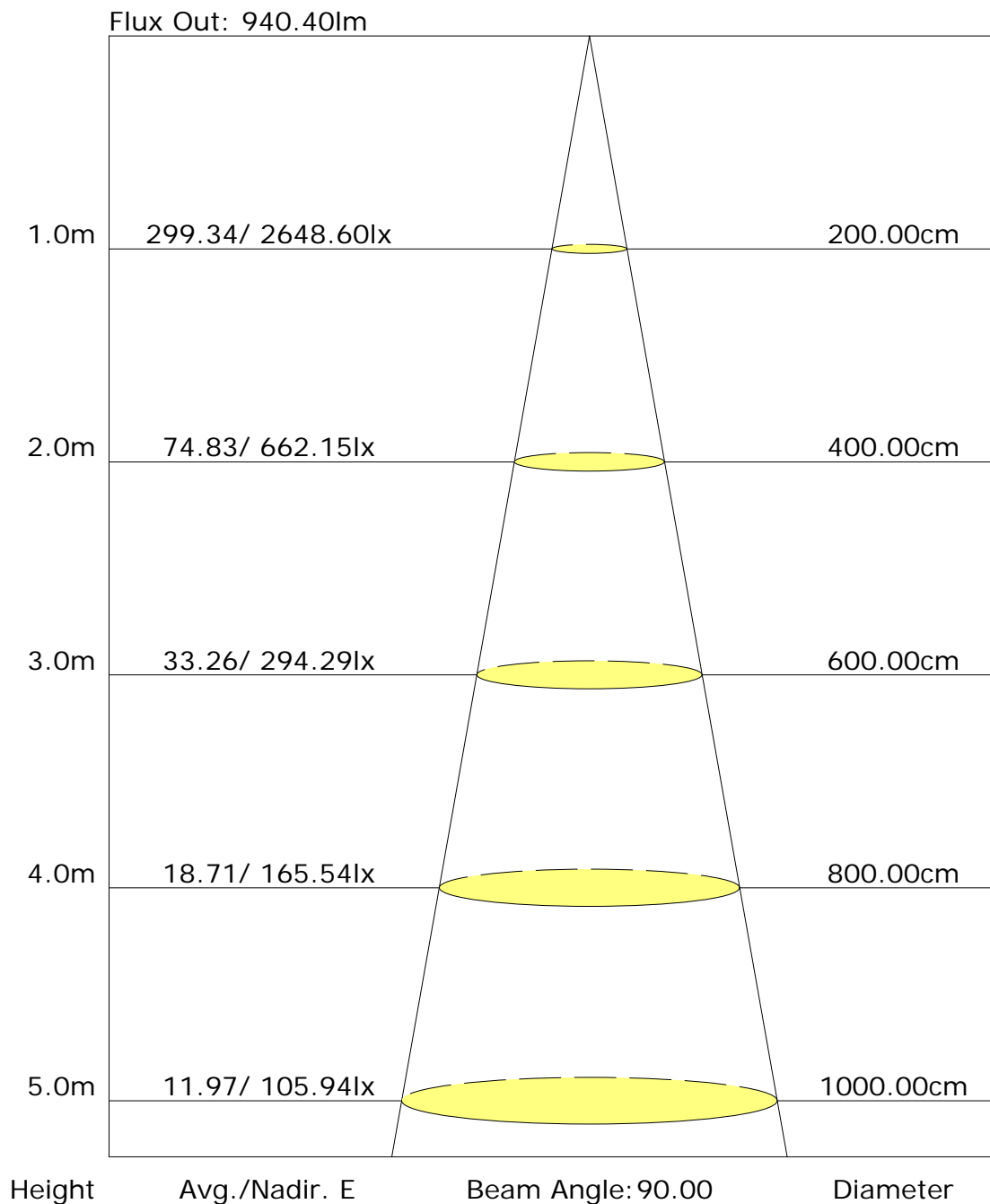
Test Device: CHL-6E

Distance: 3.000 m

Humidity:

Inspector:

## The average illuminance effective figure



C Plane (°): 0.0-180.0: 180.0

Test Lab:

Test Type: TYPE C

Temperature:

Operator:

Gamma Plane (°): 0.0-90.0: 1.0

Test Device: CHL-6E

Distance: 3.000 m

Humidity:

Inspector:

## Candlepower Table

Unit: cd

GVC	C0.0	C180.0								
G0.0	2648.6	2648.6								
G1.0	2633.8	2640.4								
G2.0	2626.5	2620.8								
G3.0	2596.6	2601.4								
G4.0	2573.1	2557.4								
G5.0	2539.2	2513.4								
G6.0	2509.7	2436.0								
G7.0	2452.0	2370.6								
G8.0	2410.9	2282.3								
G9.0	2359.0	2200.8								
G10.0	2286.4	2096.4								
G11.0	2218.6	1983.5								
G12.0	2141.6	1874.7								
G13.0	2055.4	1744.8								
G14.0	1949.4	1608.5								
G15.0	1822.4	1480.8								
G16.0	1718.6	1336.6								
G17.0	1588.2	1201.5								
G18.0	1452.9	1061.0								
G19.0	1302.2	919.7								
G20.0	1167.0	794.7								
G21.0	1028.8	677.9								
G22.0	901.3	574.1								
G23.0	773.6	484.8								
G24.0	662.0	403.7								
G25.0	559.7	337.6								
G26.0	471.9	277.4								
G27.0	393.4	225.3								
G28.0	329.2	184.0								
G29.0	271.6	135.6								
G30.0	224.5	95.4								
G31.0	169.8	74.1								
G32.0	121.0	60.5								
G33.0	96.9	51.1								
G34.0	80.2	44.9								
G35.0	67.5	40.3								
G36.0	58.0	36.7								

C Plane (°): 0.0-180.0: 180.0

Test Lab:

Test Type: TYPE C

Temperature:

Operator:

Gamma Plane (°): 0.0-90.0: 1.0

Test Device: CHL-6E

Distance: 3.000 m

Humidity:

Inspector:



## Candlepower Table (Continue 1)

Unit: cd

GVC	C0.0	C180.0								
G37.0	50.8	34.0								
G38.0	45.1	31.7								
G39.0	40.9	29.6								
G40.0	37.7	27.7								
G41.0	34.8	25.9								
G42.0	32.3	24.3								
G43.0	30.1	22.9								
G44.0	28.0	21.2								
G45.0	25.9	18.6								
G46.0	23.8	14.9								
G47.0	20.1	12.5								
G48.0	15.8	11.2								
G49.0	13.4	9.9								
G50.0	12.0	8.6								
G51.0	10.5	7.6								
G52.0	9.2	6.5								
G53.0	7.9	5.6								
G54.0	6.8	4.7								
G55.0	5.8	4.0								
G56.0	4.9	3.4								
G57.0	4.1	2.6								
G58.0	3.4	2.1								
G59.0	2.8	1.6								
G60.0	2.2	1.4								
G61.0	1.8	1.3								
G62.0	1.4	1.2								
G63.0	1.4	1.2								
G64.0	1.2	1.2								
G65.0	1.2	1.1								
G66.0	1.2	1.0								
G67.0	1.2	1.0								
G68.0	1.3	1.0								
G69.0	1.3	1.1								
G70.0	1.2	1.0								
G71.0	1.2	1.0								
G72.0	1.2	1.0								
G73.0	1.3	1.0								

C Plane (°): 0.0-180.0: 180.0

Test Lab:

Test Type: TYPE C

Temperature:

Operator:

Gamma Plane (°): 0.0-90.0: 1.0

Test Device: CHL-6E

Distance: 3.000 m

Humidity:

Inspector:



Test Device: CHL-6E  
Distance: 3.000 m  
Humidity:  
Inspector: